

**Substrate**

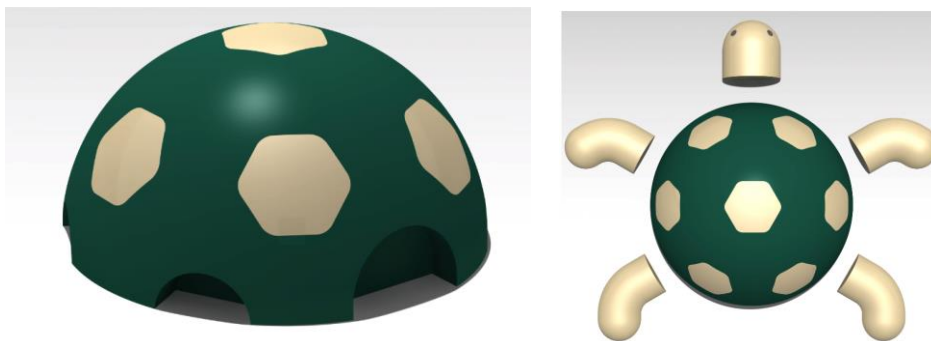
The substrate must be frost-proof and level.

**Installation**

The EUROFLEX® Turtle can either be installed with the ground anchor on a load-bearing directly into a prepared fresh concrete bed using the ground anchor on a load-bearing compacted substructure

or mounted using a steel plate (to be ordered separately).

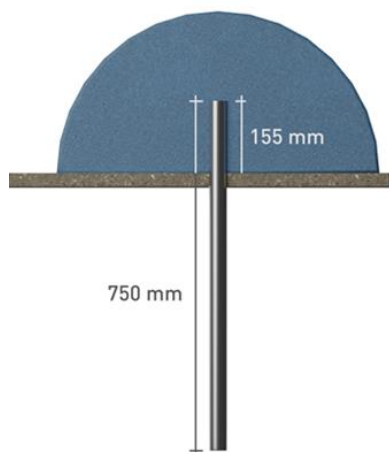
The feet and head must first be bonded using Ottocoll P83 polyurethane adhesive (gray).



The metal tube must also be bonded to the base body of the turtle using Ottocoll P83 (gray) polyurethane adhesive.

One cartridge is required for one turtle.

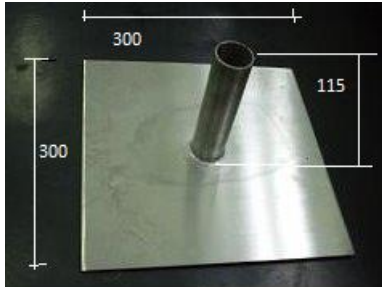
ATTENTION: It must always be ensured that the turtle rests on a solid surface over its entire surface.



**Outer tube diameter approx. 42.8mm, inner diameter approx. 38mm**

All information without guarantee, subject to change. The installation instruction is not subject to any change service. Each current and valid from can be recalled at [www.kraiburg-relastec.com/euroflex/](http://www.kraiburg-relastec.com/euroflex/)

Steel plate Base plate:

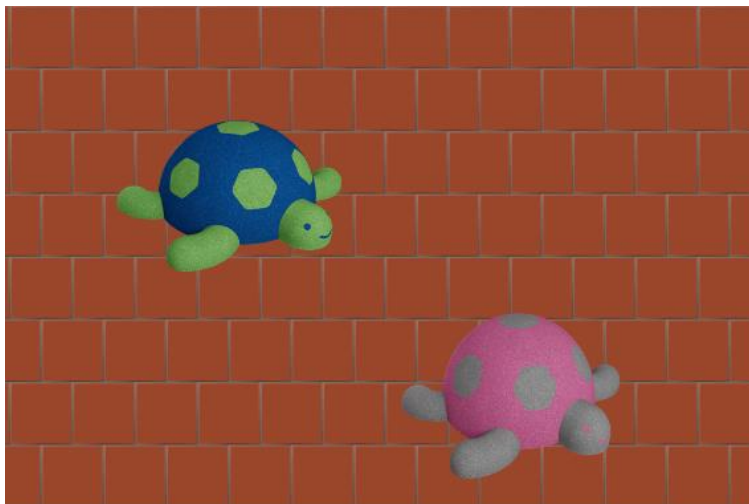


Tubular steel ground anchor:



The tube must be positively bonded to the base body.

The turtle can also be fully bonded to the EUROFLEX® fall protection slabs or Insitu coverings.



To avoid different discolorations caused by sunlight, please always cover the product completely with the UV protection film (as supplied by the factory) until it is installed.

All information without guarantee, subject to change. The installation instruction is not subject to any change service. Each current and valid from can be recalled at [www.kraiburg-relastec.com/euroflex/](http://www.kraiburg-relastec.com/euroflex/)