

Subbase

The substrate must be frost-proof and level.

Installation

The EUROFLEX® rocks can either be installed directly into a prepared fresh concrete bed using the ground anchors on a load-bearing compacted substructure or mounted using a steel plate (to be ordered separately).

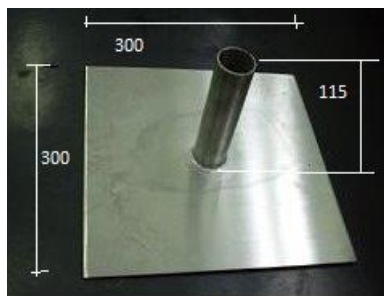
The metal pipe should be bonded to the rock using polyurethane adhesive Ottocoll P83 (gray). One cartridge is required for 3 rocks.



Outer diameter tube approx. 42mm, inner diameter approx. 38mm

Steel plate Base plate:

Steel ground anchor:



Outer diameter of tube approx. 40 mm

The tube must be positively bonded to the ball.

The rocks can also be inserted directly into a fresh concrete bed or form-fit bonded with our slabs material.



All information without guarantee, subject to change. The installation instruction is not subject to any change service. Each current and valid from can be recalled at www.kraiburg-relastec.com/euroflex/